

Description

For starting, controlling and stopping the working fluid between the generator of pressured flow, the consumers at the Tank.

Specifications

1.Valve monoblock	
2.Mounting	3 bolts M8
3.Pressure connections	internal thread
4.Ambient temperature	-40C...+60C
5.Pressure medium	mineral oil based hydraulic oil
6.Viscosity	12...800 mm ² /s permissible range 20...100 mm ² /s recommended range
7.Fluid temperature	- 15C...+80C
8.Filtration	Oil contamination 10 to NAS1638
9. Max. operating pressure	P = 250 bar T = 50 bar A, B = 300 bar
10.Leakage	18 cm ³ /min at 120 bar
11.Nominal flow	80 l/min (see “operating” diagram)
12.Spool stroke	± 7 mm
13.Actuating force	< 220 N in spool axis direction

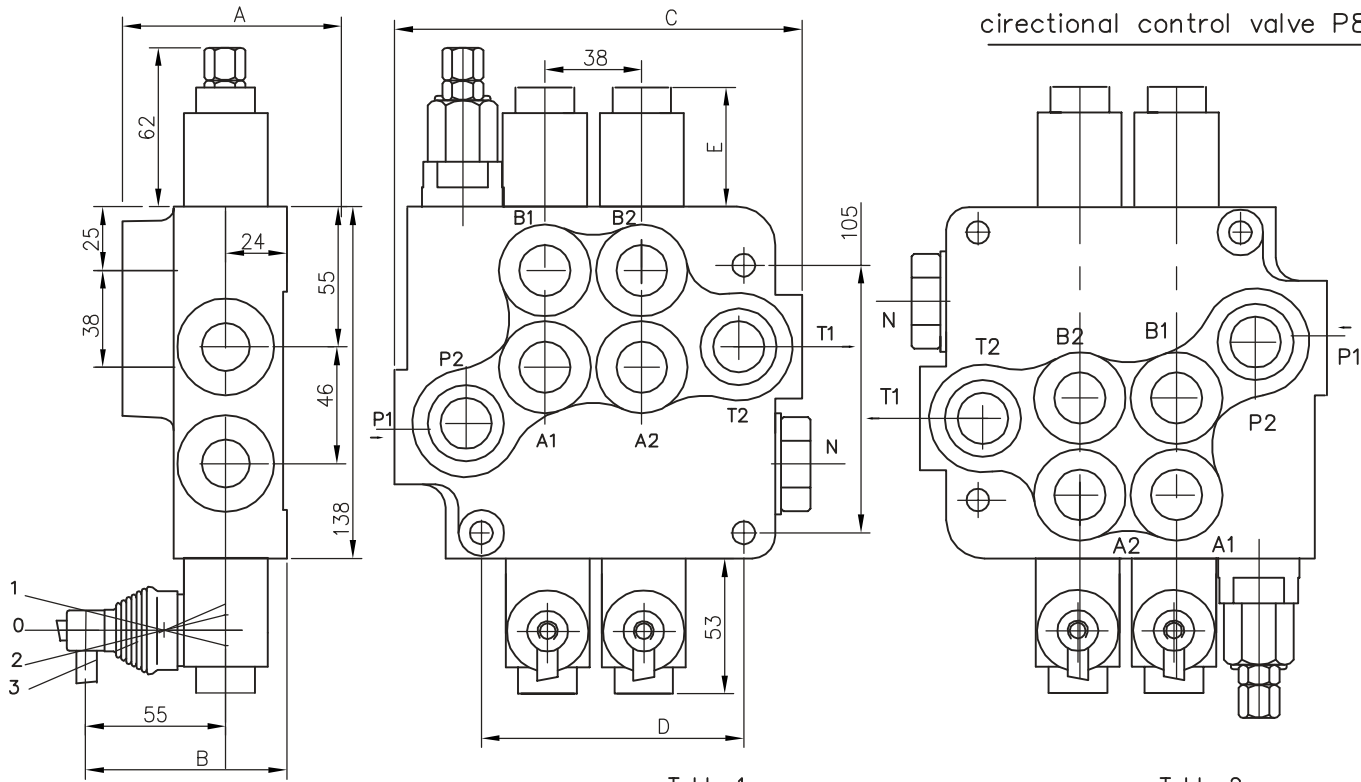


Table 1

	A	B	C	D	P1	P2	T1	T2
P80	65	79	107	65	*	*	-	-
2P80	80	94	160	103	*	*	*	*
3P80	80	94	198	141	*	*	*	*
4P80	80	94	236	179	*	*	*	*
5P80	80	94	274	217	*	*	*	*
6P80	80	94	312	255	*	*	*	*

Table 2

Spool control	E
1, 4, 5, 6, 7, 8, 9, 10, 11,	40
2, 3, 12, 14	72
13	44

0 block with common check valve
 2 number of spools
 P80 directional control valve type ...
 R inlet high pressure - right
 1 way of distribution/parallel or .../
 A first spool distribution type
 1 spool control/detend and etc./
 A second spool distribution type
 1 spool control/detend and estr./
 G ports /treads/
 KZ1 general operation feature
 T with "teton"
 H operation feature /pneumatic, .../
 E with electric switch
 C2 high pressure carry over
 11 connection ports in use

directional control valve P80

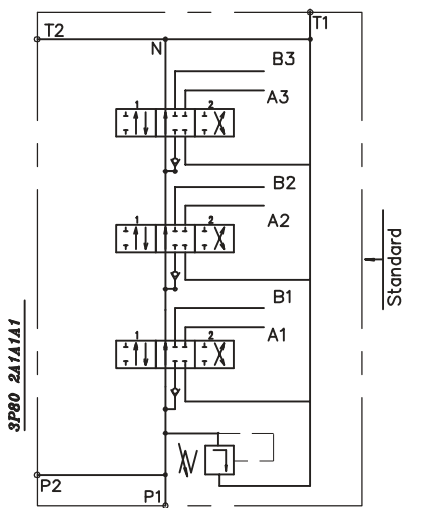
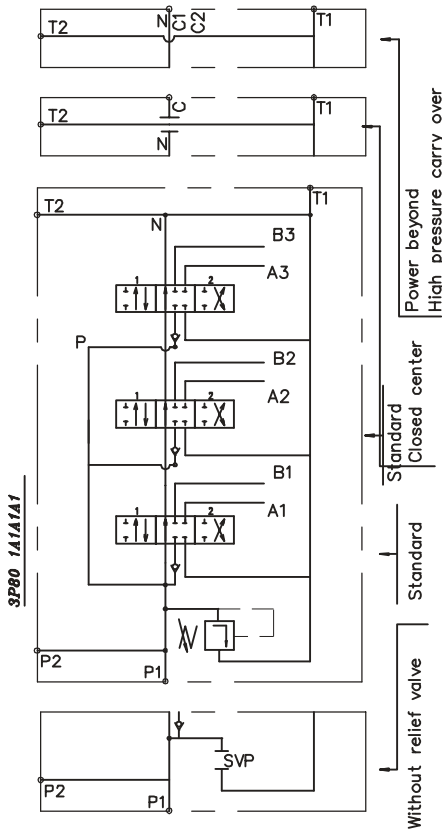


Table 3

code	Number of spools
1	1
2	2
3	3

Table 4

code	way of distribution ;
1	parallel ; n
2	tandem(series parallel) ;

ets.

Table 5

code	spool type
A	
B	
C	
D	
E	
F	
G	
H	
M	
N	
O	
P	
Q	
R	
S	
T	
L	

Table 6

code	spool control
1	
2	
3	
4	
5	
6	
7	
8	
9	
10	
11	
12	
13	

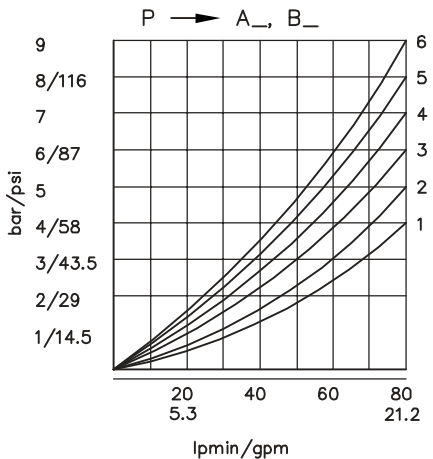
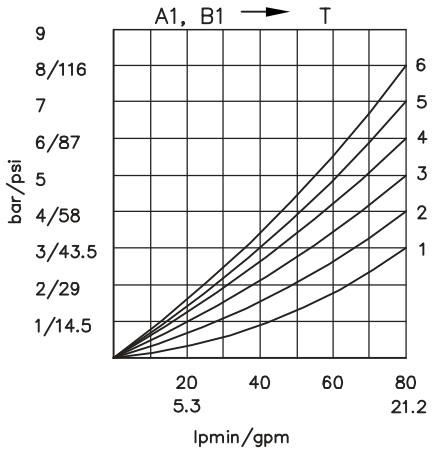
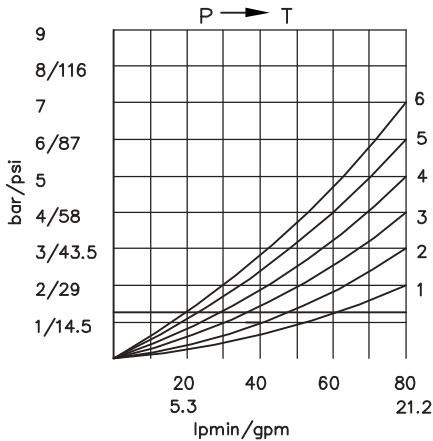
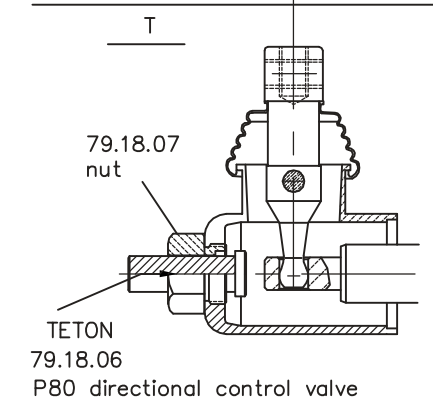
Table 7

code	incorporated microswitch
E	<div style="display: inline-block; vertical-align: middle;"> mikroswitch type Omron-V 165 I C5 </div>

Table 8

code	operation feature
P	<div style="display: inline-block; vertical-align: middle;"> on-off pneumatic control ; 5-10 bar ; ports G1/4 </div>
H	<div style="display: inline-block; vertical-align: middle;"> on-off hydraulic control ; pn = 5 - 20 bar ; ports G1/4 </div>

directional control valve P80



P80

Table 9

code	ports (threads) ;			
	P	A ; B	T	N
M	M22x1.5	M22x1.5	M26x1.5	M26x1.5
G	G1/2	G1/2	G3/4	G3/4
S	7/8-14UNF	7/8-14UNF	1 1/16-14UNF	1 1/16-14UNF

kind of hand control ;

Table 10

code	feature	code	feature	code	feature
KZ		KY		KI	
KZ1		KY1		KI1	
KZO		KY0		KI0	
KZ01		KY01		KI01	
_ without hand control ;					

Table 11

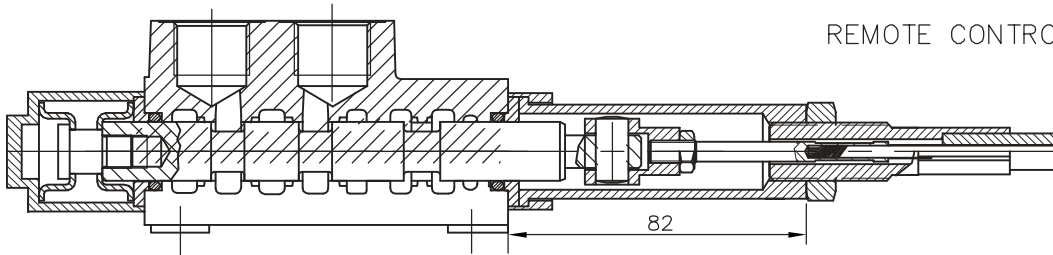
code		
C	closed center	
C2	part for power beyond sleeve (carry over)	G 1/2 M22x1.5
-	without part for pressure carry over	
X	power beyond ever to tank	

Table 12

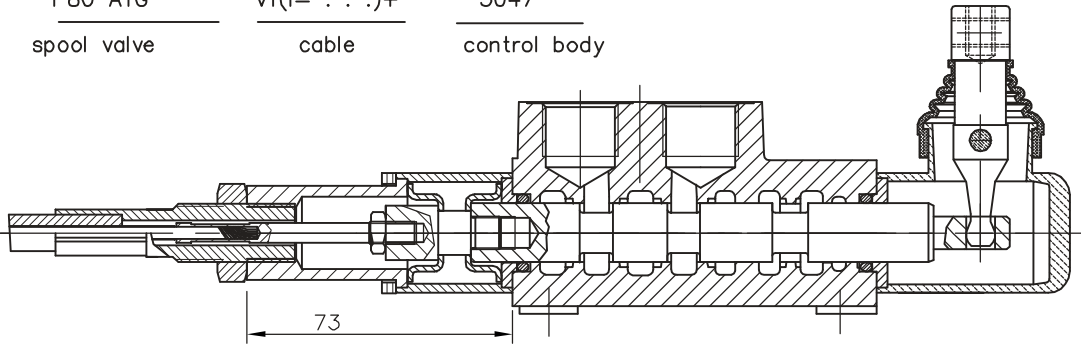
code	used connection ports ;
11	P1 ; T1
12	P1 ; T2
21	P2 ; T1
22	P2 ; T2

directional control valve P80

REMOTE CONTROLS



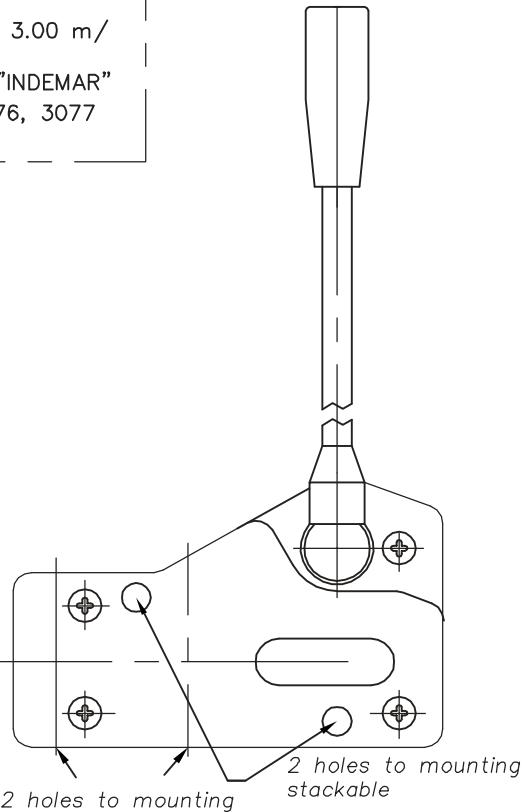
P80 A1G V1(l= . . .)+ 3047
 spool valve cable control body



P80 A1G V2KZ1(l= . . .)+ 3047
 spool valve cable control body

Cable "INDEMAR" Cod. IT 3056 /l=1.00; 1.50; 2.00; 2.50; 3.00 m/
 +control body "INDEMAR"
 code 3047, 3076, 3077

Technical specifications			
	3047	3076	3077
Stroke	13+13 mm	13+13 mm	13+13 mm
Max. load	45 kg	45 kg	45 kg
Level ratio	10:1	10:1	10:1
Lock in neutral	No	No	Yes
Antireverse lock	No	Yes	No
Body colour	Black	Black	Black
Cables type	Heavy Duty	Heavy Duty	Heavy Duty
Operating temperature	-40/+80C	-40/+80C	-40/+80C

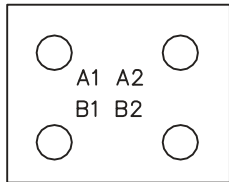
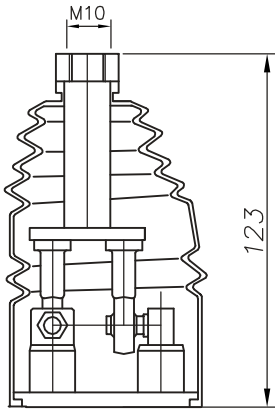


High solidity controls for easy mounting on every type of distributor. They can be mounted stand alone or packed together. They use push-pull heavy duty cables that provide a positive smooth operating lever and are manufactured in a three different models to meet different needs of Clients.

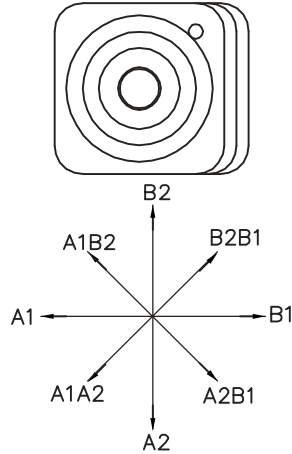
directional control valve P80

JOYSTICK "+"

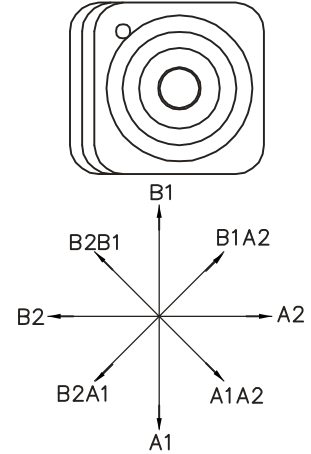
This control gives the possibility to operate, at the same time two spools with a "+" movement.



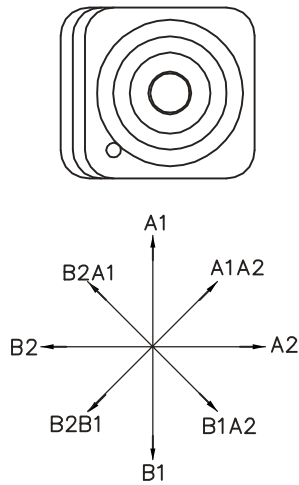
standard version 1



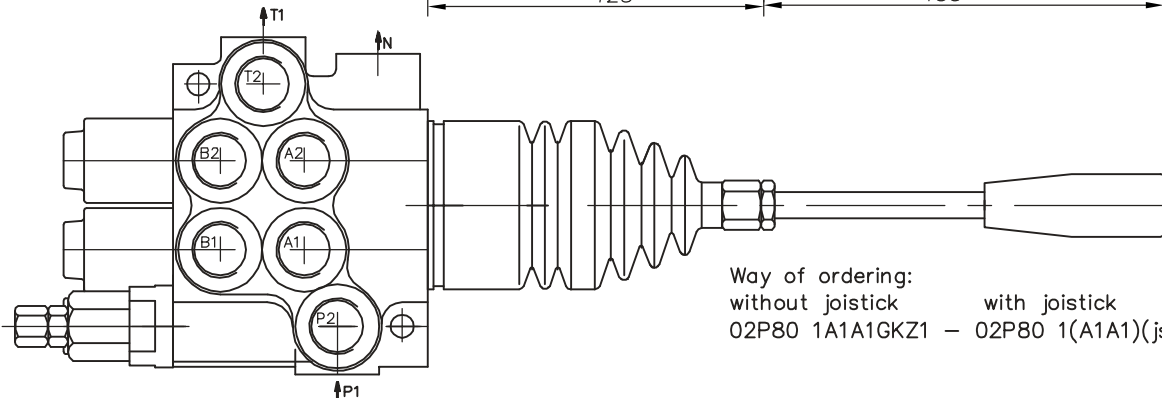
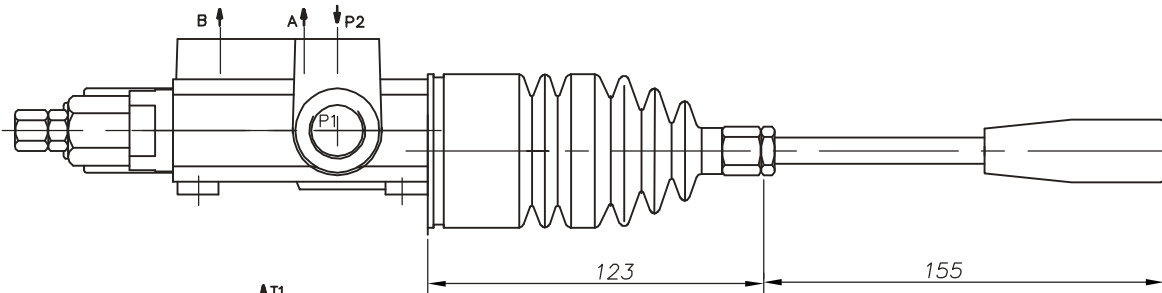
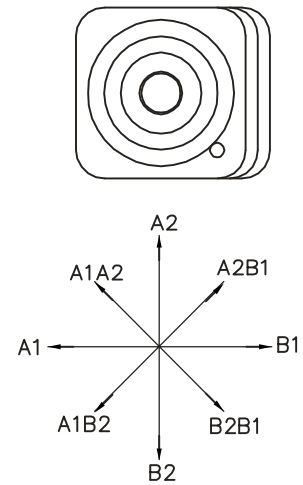
standard version 2



standard version 3

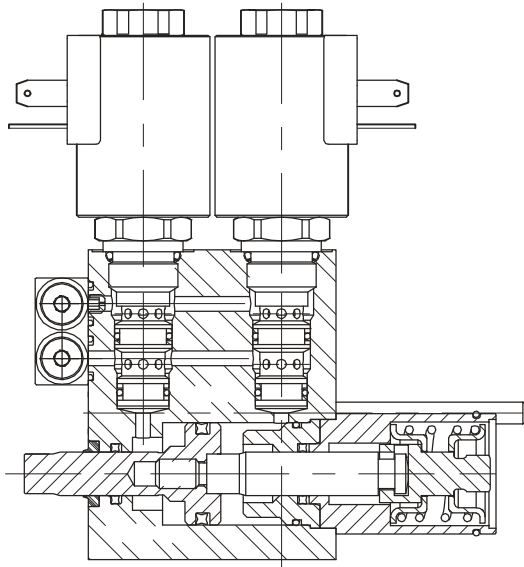


standard version 4



Way of ordering:
 without joystick with joystick
 02P80 1A1A1GKZ1 - 02P80 1(A1A1)(js+3)G

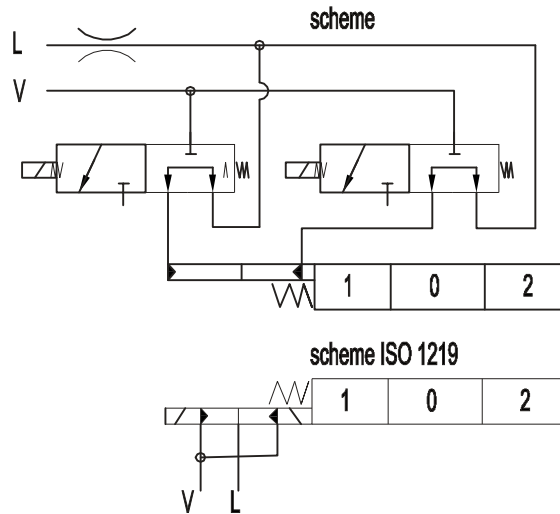
directional control valve P80



Ordering codes

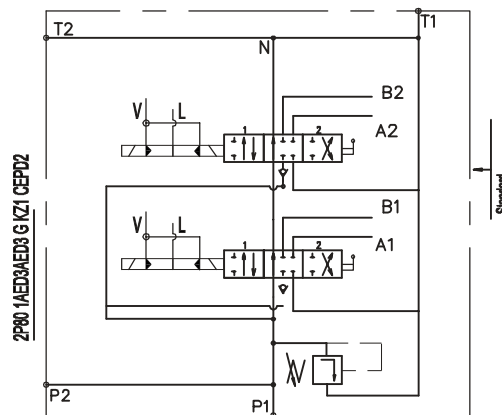
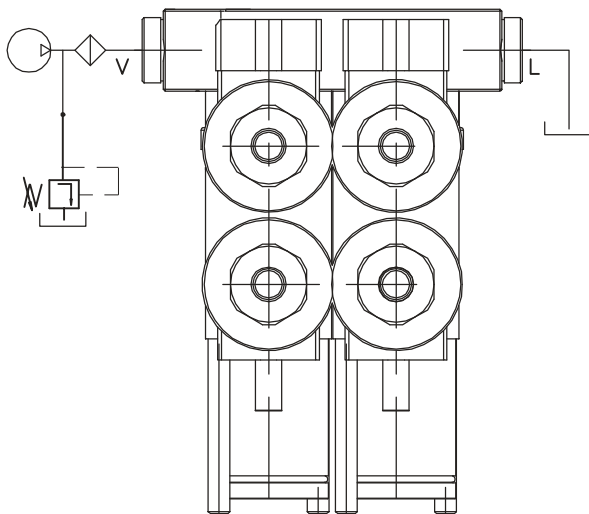
3-way solenoid valve-SV08-33
 coil P80ED3-G-12VDC
 coil P80ED3-G-24VDC

ED3 – electro-hydraulic control ON-OFF



Operating pressure	min 10 bar(145 psi)
	max 50 bar(725 psi)
Max operating pressure in L (T line)	25 bar(360 psi)
Solenoid operating features	
Nominal voltage tolerance	±10%
Power rating	24W
Duty cycle	100 %

Collector kit for external pilot and drain – CEED...(1,2,3 ...)

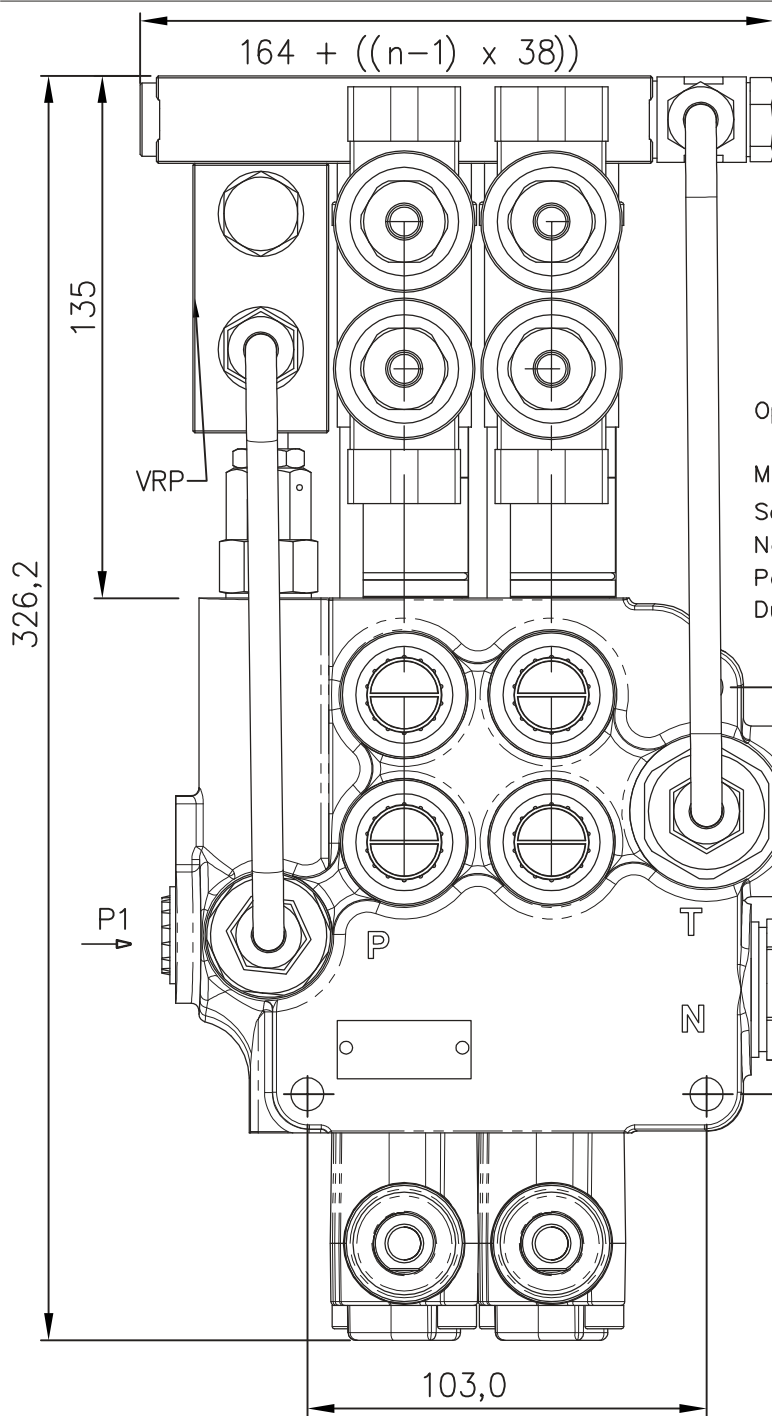


Ordering example

2P80 1A1ED3A1ED3 G KZ1-CEED2-12VDC

Ordering codes (BSP threads)

CEED1P80	Kit for 1 section
CEED2P80	Kit for 2 section
CEED3P80	Kit for 3 section
CEED480	Kit for 4 section
.....	



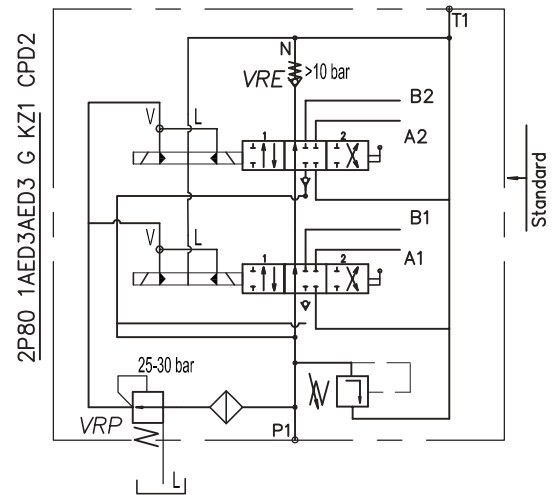
directional control valve P80

ED3 – electro-hydraulic control ON-OFF

Order codes

3-way solenoid valve-LSV2-08-3C-NNN
 coil P40ED3-G-12VDC
 coil P40ED3-G-24VDC

Operating pressure min 10 bar(145 psi)
 max 50 bar(725 psi)
 Max operating pressure in L (T line) 25 bar(360 psi)
 Solenoid operating features
 Nominal voltage tolerance ±10%
 Power rating 24W
 Duty cycle 100 %



Ordering example

2P80 VRP 1A1ED3A1ED3 G KZ1-CED2-VRE-12VDC

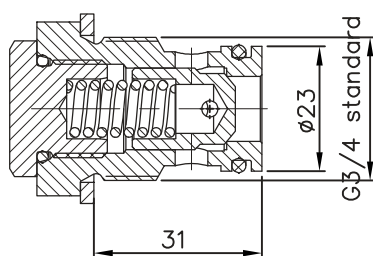
Colector kit

CED1Z80 *
 CED2P80
 CED3P80
 CED480

**Ordering codes
 BSP threads**

Kit for 1 section
 Kit for 2 section
 Kit for 3 section
 Kit for 4 section

Back pressure valve VRE-P80



Pressure drop N-T

