

## BY Proportional Pilot-Operated Relief Valve

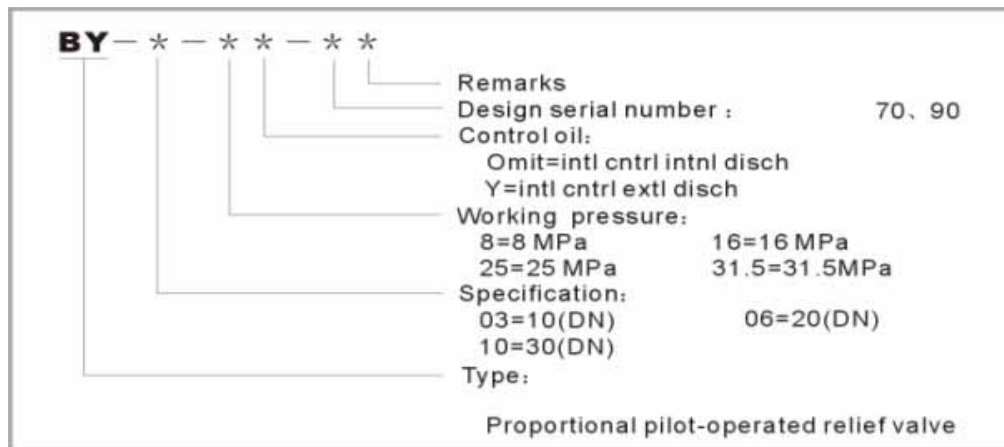
Comprised of proportional directly-operated relief valve, pressure limiting valve and low-noise relief valve, this product controls a secondary pressure from the system pressure according to the value of input current.



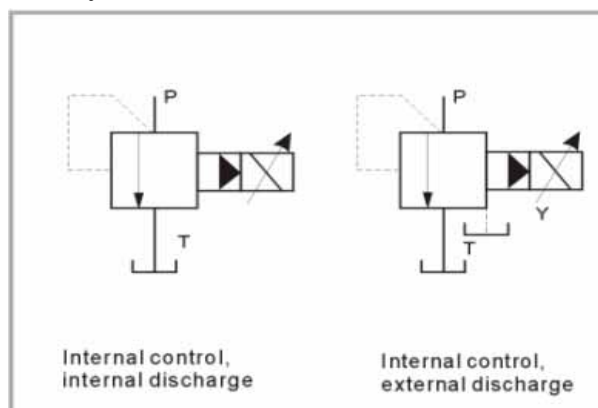
### Technical specification

Model	03	06	10
Maximum pressure (MPa)	31.5		
Maximum flow (l/min)	100	200	400
Minimum flow (l/min)	3		
Rated current (mA)	800		
Coil resistance ( )	10~19.5		
Hysteresis (%)	< ± 1.5		
Repeatability (%)	< ± 2		
Weight (Kg)	5.6	6.3	10

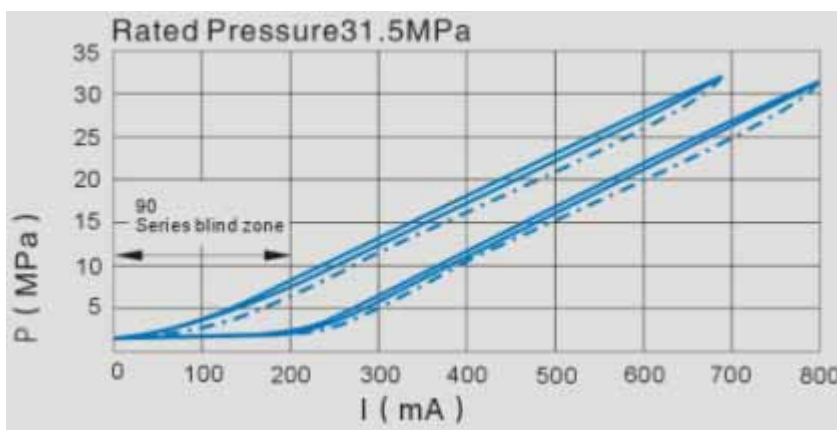
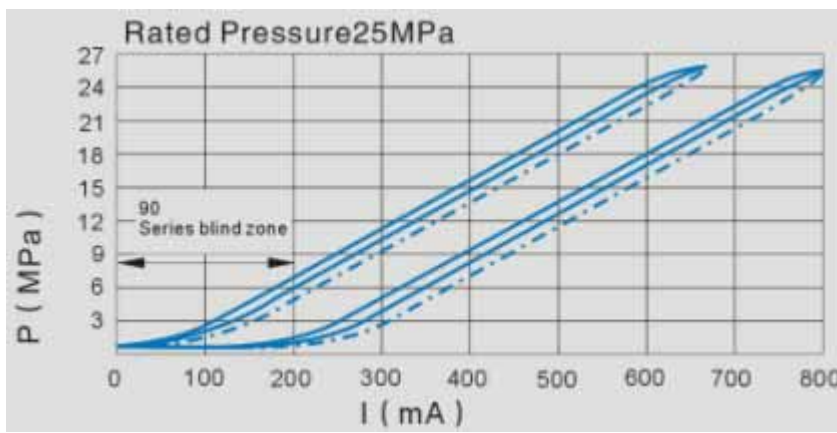
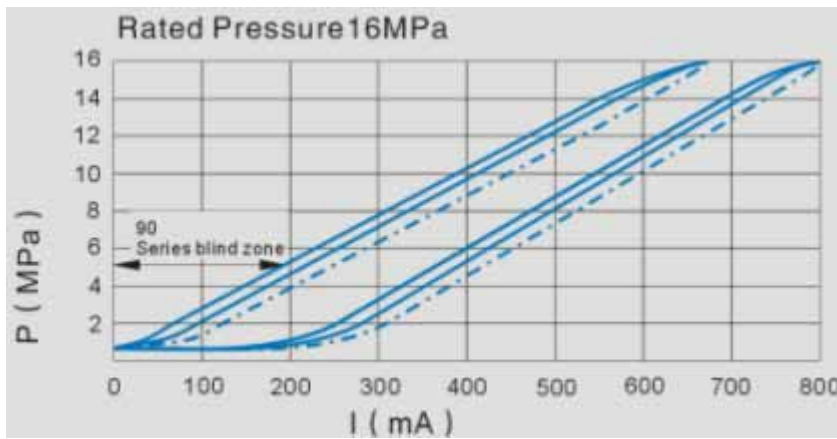
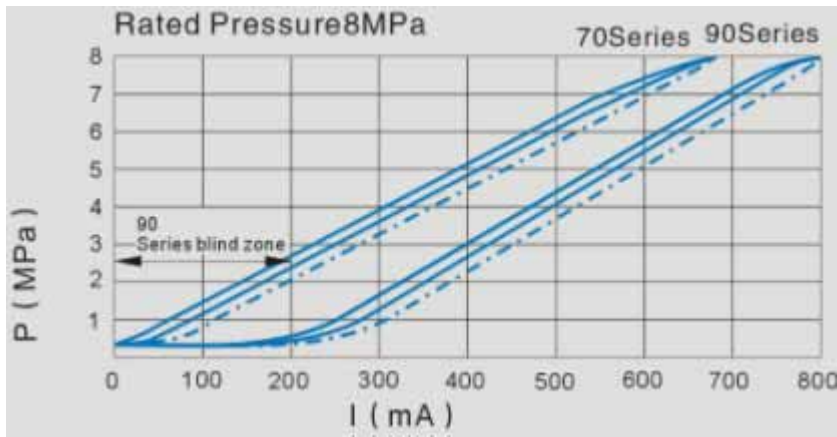
### Model instruction



### Code symbol



03, 06, 10 (  $\nu=36 \times 10^{-6} \text{m}^2/\text{S}$   $t=50^\circ\text{C}$  ) Model Characteristic Curves (Testing Condition  $\nu=36 \times 10^{-6} \text{m}^2/\text{S}$   $t=50^\circ\text{C}$ )



BY03, 06, 10. The result is tested under 27l/min



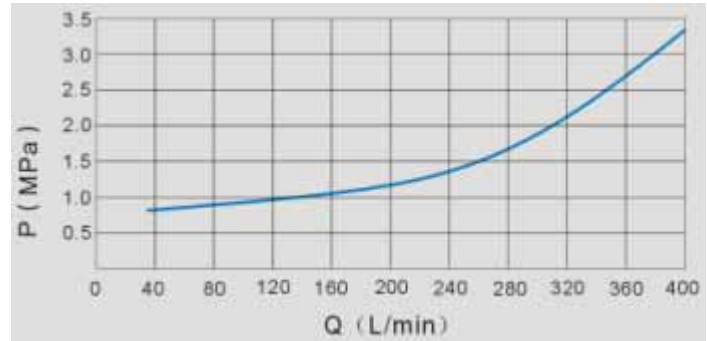
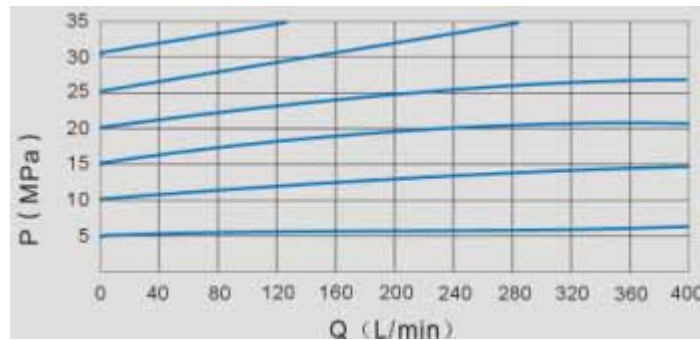
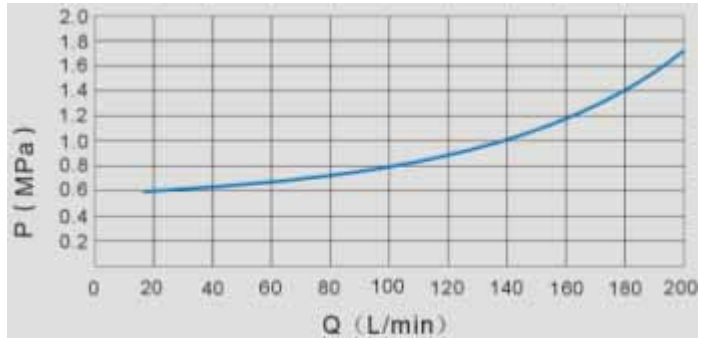
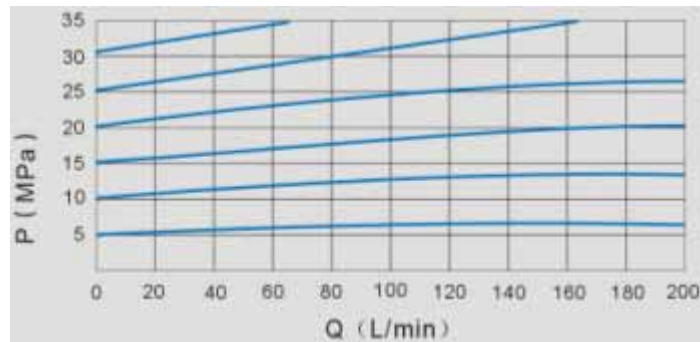
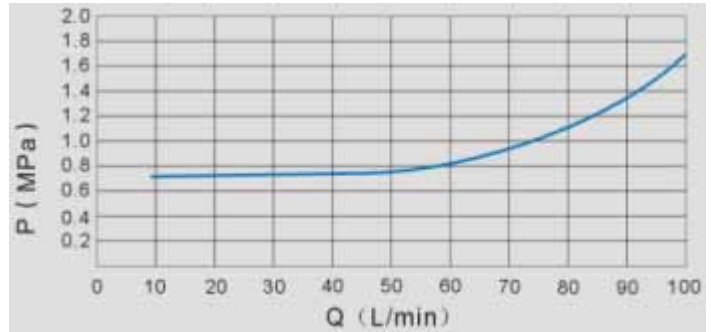
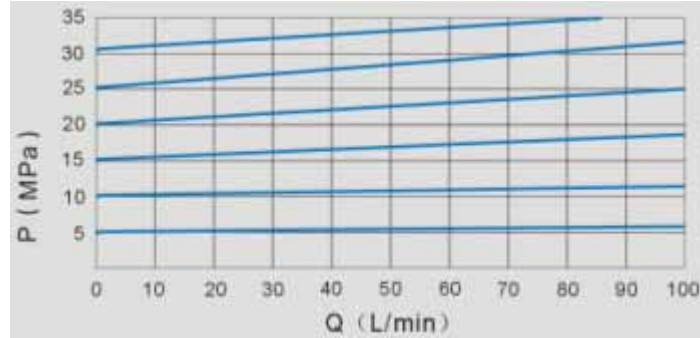
Note: In order to get the lowest settable pressure, 90 series initial current is not more than 0.1A,

70series must be 0A.

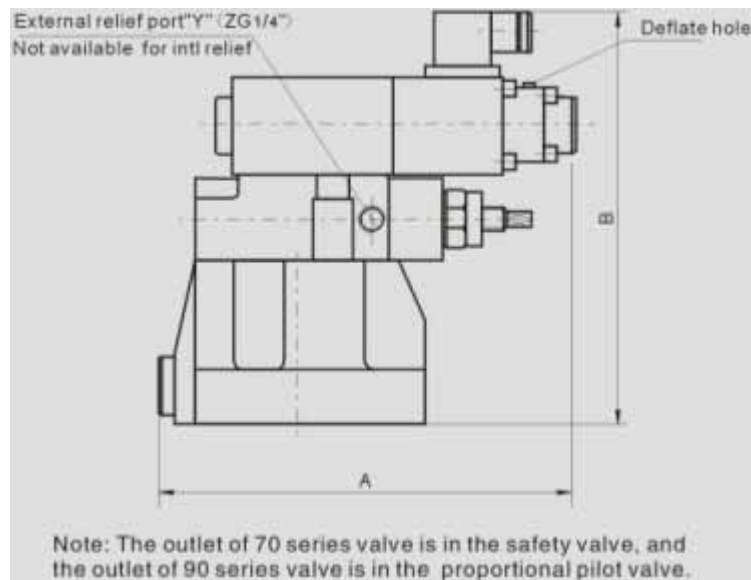
03, 06, 10 (  $\nu=36 \times 10^{-6} \text{m}^2/\text{S}$   $t=50^\circ\text{C}$  ) Model Characteristic Curves (Testing Condition  $\nu=36 \times 10^{-6} \text{m}^2/\text{S}$   $t=50^\circ\text{C}$ )

Working Pressure in relation to flow

Lowest settable pressure in relation to flow

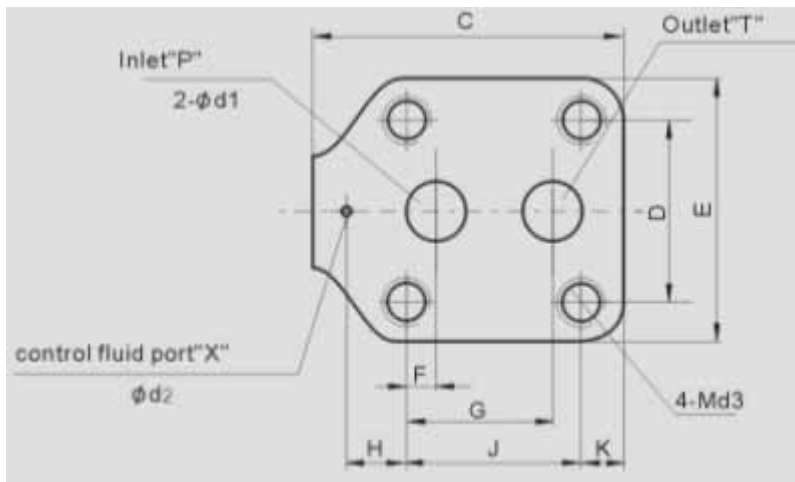


**Outside size**



Note: The outlet of 70 series valve is in the safety valve, and the outlet of 90 series valve is in the proportional pilot valve.

**Plate size**



Model	A	B	C	D	E	F	G	H	J	K	d1	d2	d3
BY-03	197	193	112	54	80	22.2	47.6	0	54	25.8	14	6	12
BY-06	197	197	119	69.8	102	11.1	55.6	23.8	66.7	16.3	24	6	16
BY-10	197	200	150	82.5	116	12.7	76.2	31.7	89	18	32	6	18

Attention : set the deflate hole upward to exhaust air from the pipe