

Sequence Valve



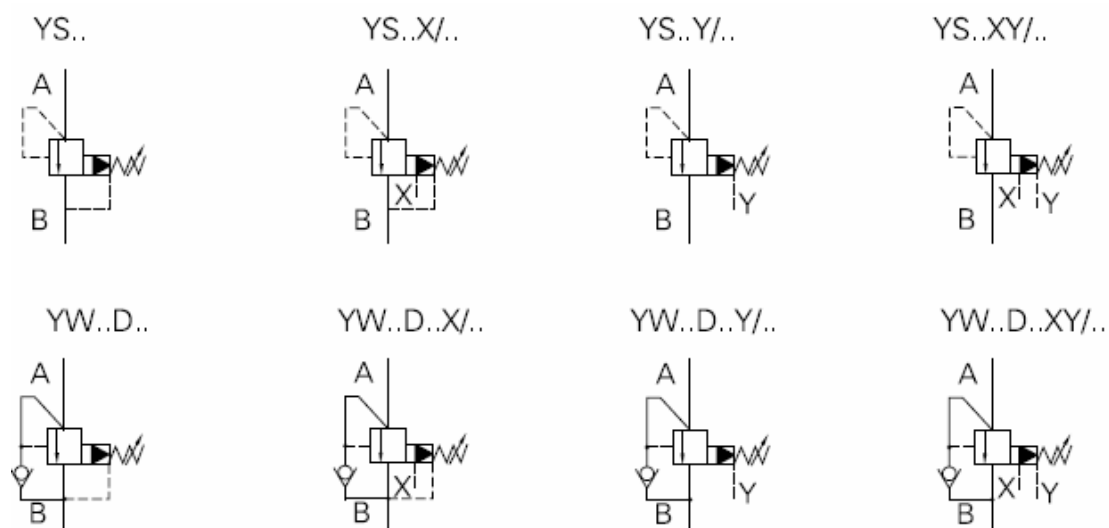
YS pilot-operated sequence valve is used to control action sequence of actuators in hydraulic systems so as to achieve automatic control. By changing the control mode, it can be applied in a back pressure valve, unload valve, bypass valve and sequence valve. In addition, an internal supply internal discharge or an external supply internal discharge sequence valve can also be used as a balance valve if it includes a check valve.

Model description

YS X-X-X / X-X X / X X 50 *

Sequence valve	Remarks
Omit Pilot operated valve	Serial number
C Pilot operated without main cartridge (not marked diameter)	Seal material
Pilot operated with main cartridge (marked diameter)	Omit NBR seal
Specification	V FPM seal
03 NS 10	Pilot operated drainage port thread
06 NS 20	Omit G1/4"
10 NS 30	2 M14X1.5
Working press	Omit Intl cntrl intl drain
5 to 5MPa	X Extl cntrl intl drain
10 to 10MPa	Y Intl cntrl extl drain
20 to 20MPa	X Y Extl cntrl extl drain
31.5 to 31.5MPa	1 Hand wheel
	2 Adjusting bolt with boot cap
	3 Adjusting handle with scale and lock
	7 Adjusting handle with scale
	Omit Without check valve
	D With check valve

Code symbol



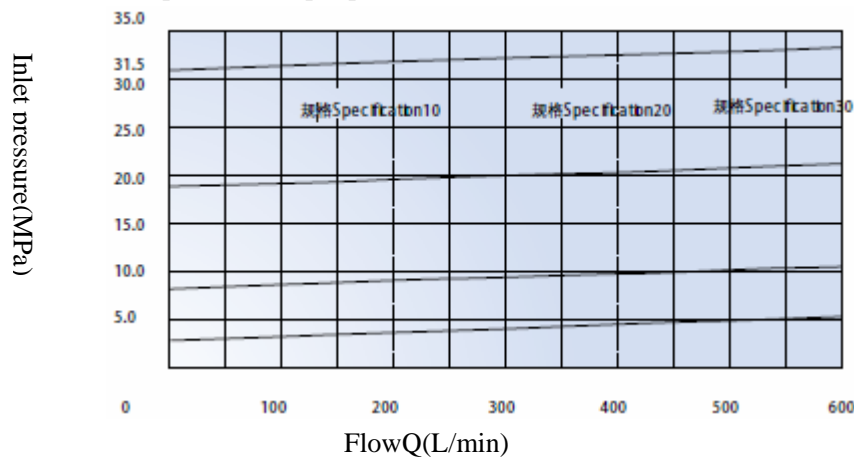
Technical specification

		03	06	10		
Maximum working pressure(MPa)		31.5				
Maximum flow(L/min)		250	500	650		
Working fluid		Mineral oil, phosphate-ester				
Fluid temp(°C)		-20~70				
Viscosity(mm ² /s)		12~380				
Working Press(Mpa)		5	10	20	31.5	35
Weight(Kg)	Y	2.6	3.5	4.4		
	YW	3.8	4.7	5.6		

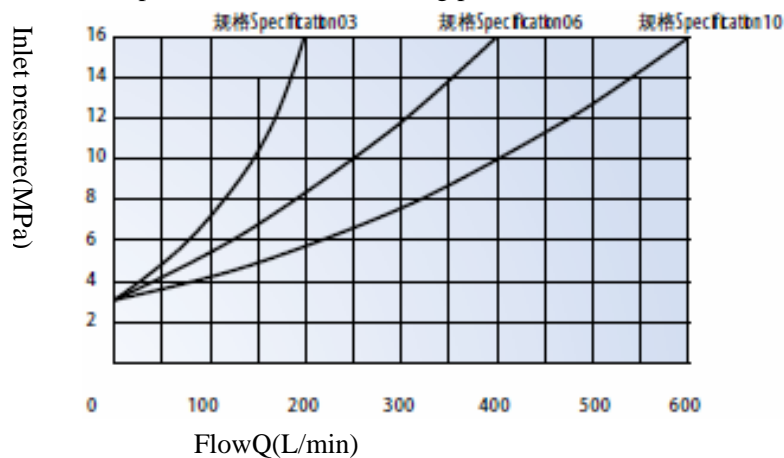
Performance curve

Test under $v = 41\text{mm}^2/\text{s}$ and $t = 50^\circ\text{C}$

The relationship between input pressure and flow

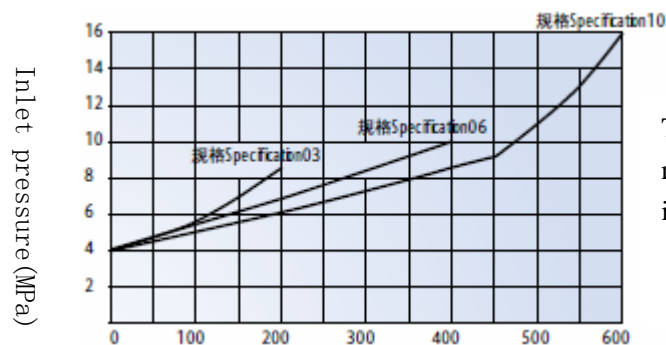


The relationship between minimum setting pressure and flow (= '...X...') By pass pressure type



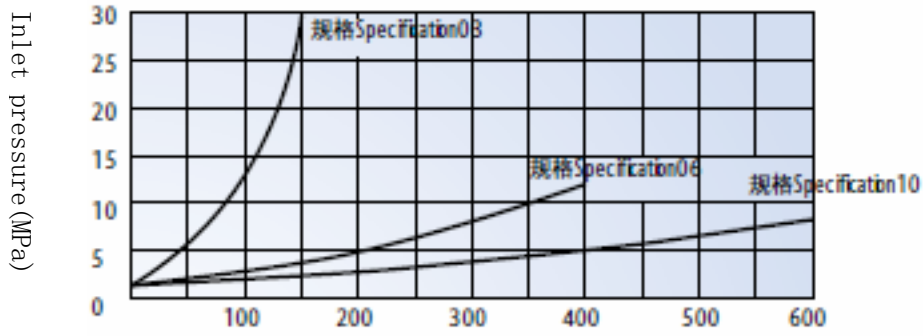
The curve is available in the entire range of flow when outlet pressure is 0 mpa.

The relationship between by pass pressure and flow ('...XY...')

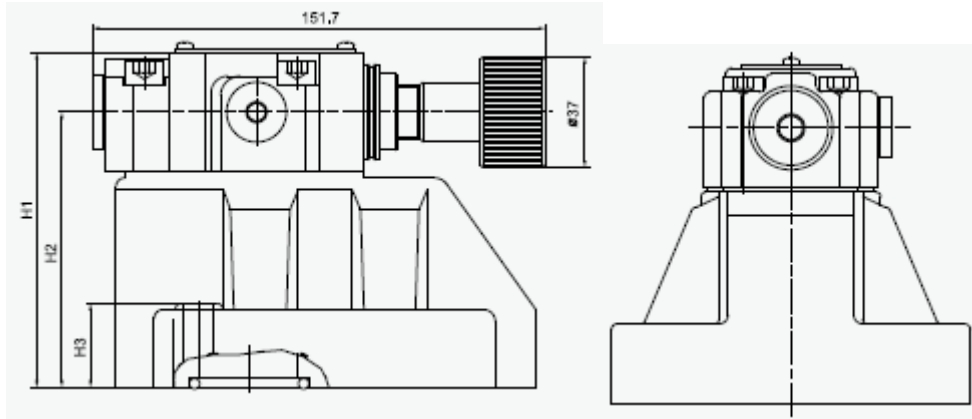


The curve is available in the entire range of flow when outlet pressure is 0 mpa.

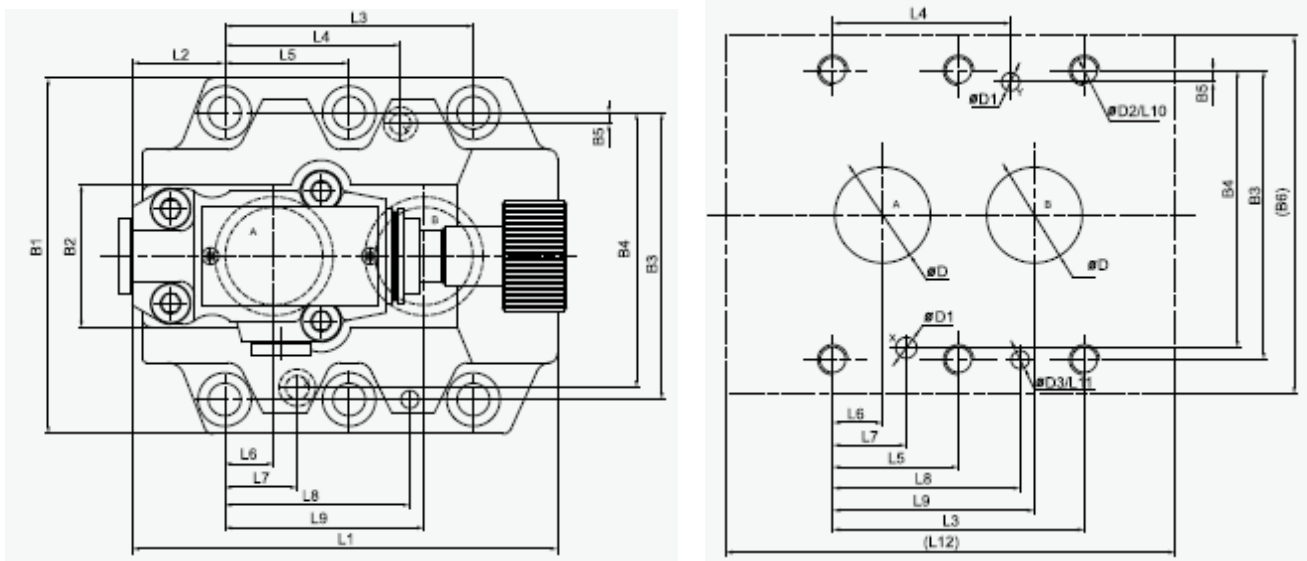
The curve P-Q pass through check valve



External dimensions



Size of subplate oil port



Parameter	L1	L2	L3	L4	L5	L6	L7	L8	L9	L10	L11	L12	B1	B2	B3	B4	B5	B6	H1	H2	H3
YS-03	96	35.5	42.9	21.5	-	7.2	21.5	31.5	35.8	23	6	98	85	50	66.7	58.8	7.9	87	112	92	28
YS-06	116	37.5	60.3	39.7	-	11.1	20.6	44.5	49.2	24	6	118	102	59.5	79.4	73	6.4	104	122	102	38
YS-10	145	33	84.2	59.5	42.1	16.7	24.6	62.7	67.5	25	6	147	120	76	96.8	92.8	3.8	149	130	110	46

Parameter	D	D1	D2	D3
YS-03	12	6	M10	7
YS-06	25	6	M10	7
YS-10	32	6	M10	7

Specification	Mounting screw	Tighten torque
YS-03	4-M10x50-10.9	75Nm
YS-06	4-M10x60-10.9	75Nm
YS-10	4-M10x70-10.9	75Nm