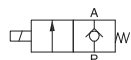


V221



How to Order?

Low power solenoid valve

Series No.	ID Code	Positions	Ways	Controls	Port size	Voltage	Connection mode	Cover color	Thread type
N	M: Standard armature+ Low power coil	2 positions	2:2 ways	1: Single control	06: 1/8 " 08: 1/4 "	E1 : AC110V E2: AC220V E4: DC24V	Blank: DIN connector F: Flying leads	Blank: Brown translucent J: Colorless and translucent	Blank: G P: PT T: NPT

Standard solenoid valve

Series No.	ID Code	Positions	Controls	Port size	Ways	Voltage	Connection mode	Cover color	Thread type
V	Blank: standard type A: Amisco coil	2 positions	1: Single control	06: 1/8 " 08: 1/4 "	2:2 ways	E1: AC110V E2: AC220V E3: AC380V E4: DC24V E5: DC12V	E6: AC36V E7: AC24V E8: DC110V E9: DC48V E10: DC36V	Blank: Brown translucent J: Colorless and translucent	Blank: G P: PT T: NPT

Order Example:

V series directional valve, 2/2 way, single control, 1/8 port size, Amisco coil, AC110V, DIN connector, G thread, ERP code is: V221-06AE1

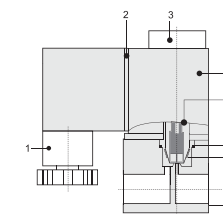
Specifications

Model No.	NM221-06	NM221-08	V221-06	V221-08
Working medium	Air, water, oil			
Acting type	Direct acting			
Orifice (mm)	2			
Port size	1/8	1/4	1/8	1/4
Lubrication	Not required			
Working pressure (MPa)	0-0.8			
Guaranteed pressure (MPa)	1.2			
Working temperature (°C)	-5-60			
Voltage range	-15% - +10%			
Power consumption	AC:1VA	DC:0.9W	AC: 5 VA	DC : 4.8W
Insulation class	Class F			
Protective class	IP65 (DIN40050)			
Activate time (s)	<0.05			
Seal material	NBR			
Weight (g)	141	138	141	138

Product Features

- * Various voltages and working styles are available.
- * Different surface treatment, thread types (G,PT,NPT) are available.

Internal structure

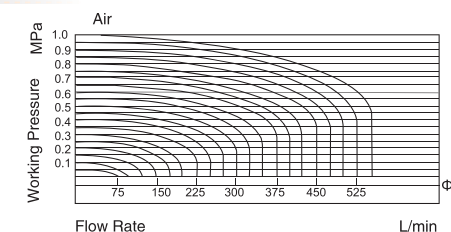
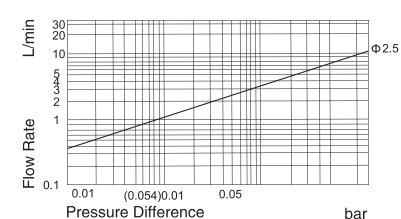


No	Designation
1	Connector
2	Connector washer
3	Nut
4	Coil
5	Pilot units
6	O-ring
7	Spring
8	Valve body

Main Parts Material

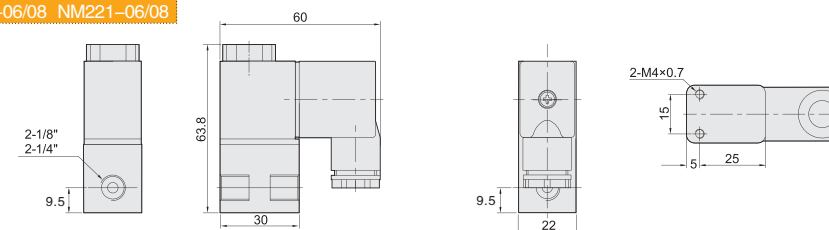
Part name	Material
Valve body	Aluminum alloy
Connector	Engineering plastic
Connector washer	NBR (FPM)
Pilot units	Pure steel+Cu+Stainless steel
Diaphragm	NBR
Nut	POM+Carbon steel
Coil	Brass Wire covered with heat resistance colophony

Flow Chart



Main Dimension

V221-06/08 NM221-06/08



(If with th steel nut, the height is 60.7mm)