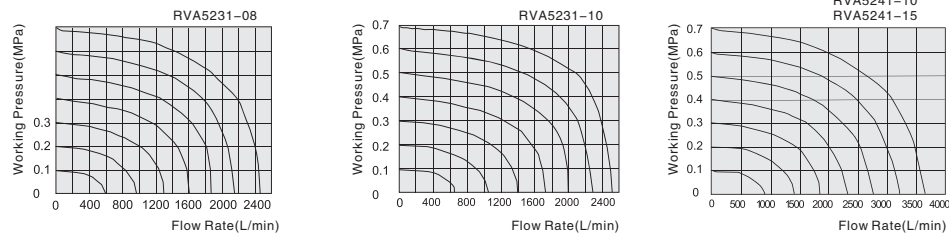


Flow Chart

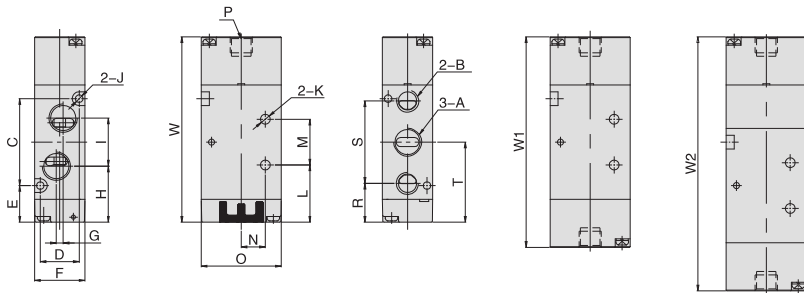


Main Dimension

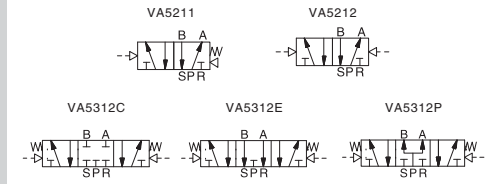
Single air control

Double air control

5/3 ways solenoid valve



Model/Sign	A	B	C	D	E	F	G	H	I	J	K	L	M	N	O	P	R	S	T	W	W1	W2
RVA5211-M5	M5	M5	30	13	16.5	18	0	24.5	14.1	3.3	3.3	24.5	14	9.5	27	G1/8	17.9	27.2	31.5	72	81	96
RVA5211-06	G1/8	G1/8	30	13	16.5	18	3	23.5	16	3.3	3.3	24.5	14	9.5	27	G1/8	17.5	28	31.5	72	81	96
RVA5221-06	G1/8	G1/8	38	17	16	22	0	26	18	3.3	4.3	25	20	10.5	35	G1/8	17	36	35	81	92	111
RVA5221-08	G1/4	G1/4	38	17	16	22	3	24.5	21	3.3	4.3	25	20	10.5	35	G1/8	17	36	35	81	92	111
RVA5231-08	G1/4	G1/4	50	20	19.1	27	0	33.1	22	4.3	4.3	32.1	24	13.5	40	G1/8	21.6	45	44.1	99.6	111	130
RVA5231-10	G3/8	G3/8	50	20	19.1	27	4	32.1	24	4.3	4.3	32.1	24	13.5	40	G1/8	21.6	45	44.1	99.6	111	130
RVA5241-10	G3/8	G3/8	72	27	21	34	0	39	36	4.3	5.5	43	28	17.5	50	G1/8	25.5	63	57	127	140	161
RVA5241-15	G1/2	G1/2	72	27	21	34	4	39	36	4.3	5.5	43	28	17.5	50	G1/8	25.5	63	57	127	140	161



How to Order?

Series No.	Ways	Positions	Valve body size	Controls	Original status	Port size	Valve type	Valve color	Thread type
VA	5:5 ways	2: 2 positions 3: 3 positions	1: 1Series 2: 2Series 3: 3Series 4: 4Series	1: Single control 2: Double control	C: Center close P: Center pressure E: Center exhaust (Only for 5/3 way)	M5: M5 06: 1/8" 08: 1/4" 10: 3/8" 15: 1/2"	Blank: Standard type M: NAMUR type	Blank: Black W: White	Blank: G P: PT T: NPT

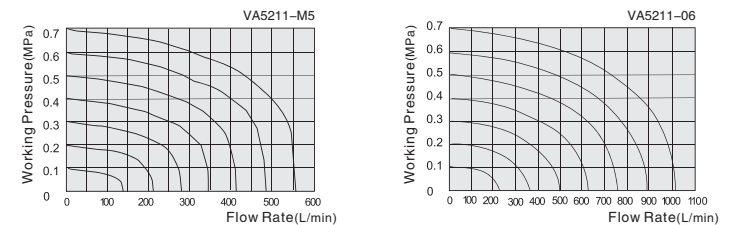
Order Example:

V series air control valve, 1 series valve body size, 5/2 way, single control, 1/8" port size, standard valve body, white color, PT thread, ERP code is: VA5211-06W-P

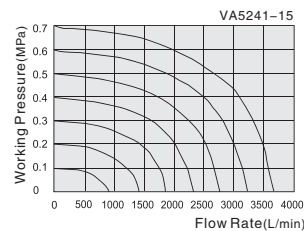
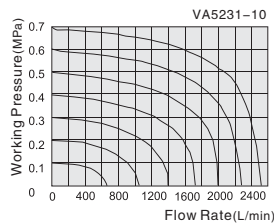
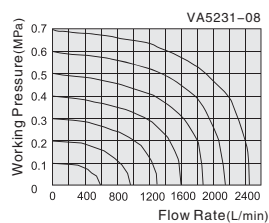
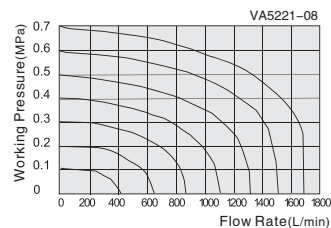
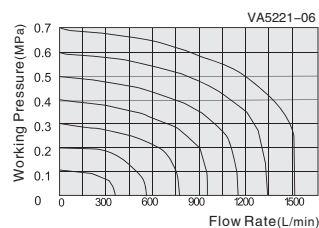
Specifications

Model NO.	VA5211-M5 VA5212-M5 VA5312-M5	VA5211-06 VA5212-06 VA5312-06	VA5221-06 VA5222-06 VA5322-06	VA5221-08 VA5222-08 VA5322-08	VA5231-08 VA5232-08 VA5332-08	VA5231-10 VA5232-10 VA5332-10	VA5241-10 VA5242-10 VA5342-10	VA5241-15 VA5242-15 VA5342-15
Port size	M5	G1/8	G1/8	G1/4(Ex.G1/8)	G1/4	G3/8(Ex.G1/4)	G3/8	G1/2
Sectional area(mm ²)	5/2:5.5(CV=0.31) 5/3:5.5(CV=0.28)	5/2:12(CV=0.67) 5/3:9(CV=0.50)	5/2:14(CV=0.78) 5/3:12(CV=0.67)	5/2:16(CV=0.89) 5/3:12(CV=0.67)	5/2:25(CV=1.40) 5/3:18(CV=1.00)	5/2:30(CV=1.68) 5/3:18(CV=1.00)	5/2:50(CV=2.79) 5/3:30(CV=1.67)	5/2:50(CV=2.79) 5/3:30(CV=1.67)
Working medium	Clean air(After 40 μm filtration)							
Acting type	External type							
Lubrication	Not required							
Working pressure(MPa)	0.15-0.8							
Guaranteed pressure(MPa)	1.2							
Working temperature(°C)	-5-60							
Max. acting frequency	5/2:5 Cycles/s; 5/3:3 Cycles/s							
Weight(g)	V5211: 72 V5212: 87 V5312: 181		V5221: 128 V5222: 153 V5322: 219		V5231: 218 V5232: 260 V5332: 358		V5241: 437 V5242: 490 V5342: 598	

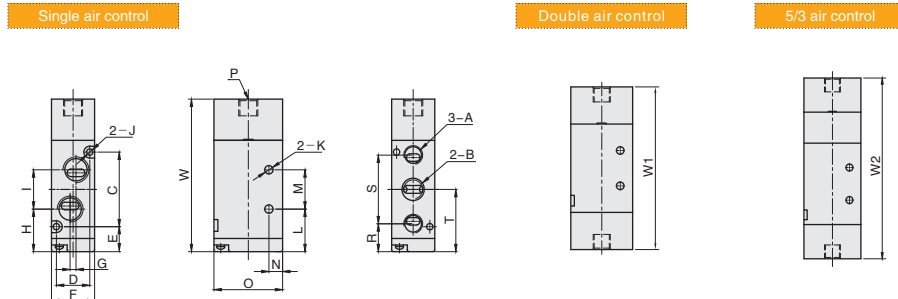
Flow Chart



Flow Chart



Main Dimension

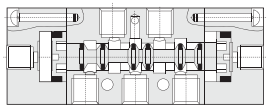
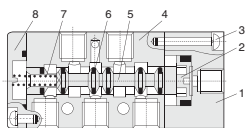


Model/Sign	A	B	C	D	E	F	G	H	I	J	K	L	M	N	O	P	R	S	T	W	W1	W2
VA5211-M5	M5	M5	30	13	13.2	18	0	21	14.5	3.3	3.3	21.2	14	9.5	27	G1/8	14.5	27.5	28.2	68.7	81	96
VA5221-06	G1/8	G1/8	30	13	13.2	18	3	20.2	16	3.3	3.3	21.2	14	9.5	27	G1/8	14.5	27.5	28.2	68.7	81	96
VA5221-08	G1/4	G1/8	38	17	12.7	22	0	22.7	18	3.3	4.3	21.7	20	10.5	35	G1/8	14.2	35	31.7	77.7	92	111
VA5231-08	G1/4	G1/8	38	17	12.7	22	3	21.7	20	3.3	4.3	21.7	20	10.5	35	G1/8	14.2	35	31.7	77.7	92	111
VA5231-10	G1/4	G1/4	50	20	15	27	0	28	24	4.3	4.3	28	24	13.5	40	G1/8	17.5	45	40	95.5	111	130
VA5241-10	G3/8	G1/4	50	20	15	27	4	28	24	4.3	4.3	28	24	13.5	40	G1/8	17.5	45	40	95.5	111	130
VA5241-15	G3/8	G3/8	72	27	21	34	0	39	36	4.3	5.5	43	28	17.5	50	G1/8	25.5	63	57	127	140	162
VA5241-15	G1/2	G1/2	72	27	21	34	4	39	36	4.3	5.5	43	28	17.5	50	G1/8	25.5	63	57	127	140	162

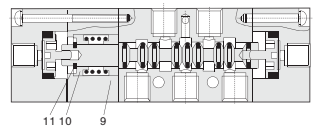
Internal structure

Single air control

Double air control



5/3 air control



NO.	Part name	Material
1	Air control cover	Aluminum alloy
2	Piston	POM
3	Screw	Carbon steel
4	Valve body	Aluminum alloy
5	Spool	Aluminum alloy
6	O-ring	NBR
7	Spring	Stainless steel
8	Rear cover	Zinc alloy
9	Back seat	Aluminum alloy
10	Spring seat	Aluminum alloy
11	C-type buckle	65Mn