

How to Order?

| Series No. | Ways     | Positions     | Valve body size                                      | Controls                               | Original status    | Port size  | Valve type                            | Valve color              | Thread type                 |
|------------|----------|---------------|--|--|--------------------|--|---------------------------------------|--------------------------|-----------------------------|
| VA         | 3:3 ways | 2:2 positions | 1: 1Series<br>2: 2Series<br>3: 3Series<br>4: 4Series | 1: Single control<br>2: Double control | Blank: NC<br>H: NO | M5: M5<br>06: 1/8"<br>08: 1/4"<br>10: 3/8"<br>15: 1/2" | Blank: Standard type<br>M: NAMUR type | Blank: Black<br>W: White | Blank: G<br>P: PT<br>T: NPT |

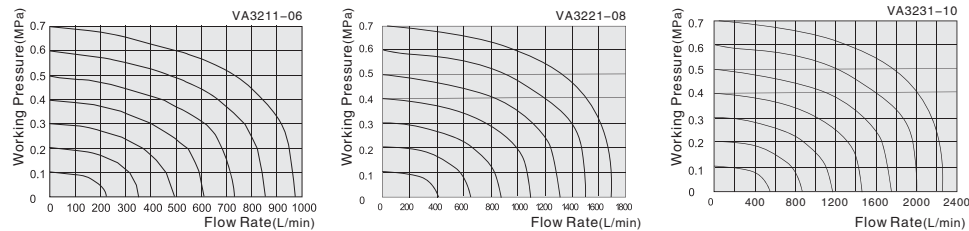
**Order Example:**  
V series air control valve, 1 series valve body size, NC type, 3/2 way, 1/8" port size, standard valve body, white color, PT thread, ERP code is: VA3211-06W-P

Specifications

| Model NO.                        | VA3211-M5<br>VA3212-M5            | VA3211-06<br>VA3212-06     | VA3221-06<br>VA3222-06     | VA3221-08<br>VA3222-08     | VA3231-08<br>VA3232-08 | VA3231-10<br>VA3232-10 | VA3241-10<br>VA3242-10 | VA3241-15<br>VA3242-15 |
|----------------------------------|-----------------------------------|----------------------------|----------------------------|----------------------------|------------------------|------------------------|------------------------|------------------------|
| Port size                        | M5                                | G1/8                       | G1/8                       | G1/4                       | G1/4                   | G3/8                   | G3/8                   | G1/2                   |
| Sectional area(mm <sup>2</sup> ) | 5.5(CV=0.31)                      | 12(CV=0.67)                | 14(CV=0.78)                | 16(CV=0.89)                | 25(CV=1.40)            | 30(CV=1.68)            | 50(CV=2.79)            | 50(CV=2.79)            |
| Working medium                   | Clean air(After 40 μm filtration) |                            |                            |                            |                        |                        |                        |                        |
| Acting type                      | External type                     |                            |                            |                            |                        |                        |                        |                        |
| Lubrication                      | Not required                      |                            |                            |                            |                        |                        |                        |                        |
| Working pressure(MPa)            | 0.15-0.8                          |                            |                            |                            |                        |                        |                        |                        |
| Guaranteed pressure(MPa)         | 1.2                               |                            |                            |                            |                        |                        |                        |                        |
| Working temperature(°C)          | -5-60                             |                            |                            |                            |                        |                        |                        |                        |
| Max. acting frequency            | 5 Cycles/s                        |                            |                            |                            |                        |                        |                        |                        |
| Weight(g)                        | VA3211: 60<br>VA3212: 75          | VA3221: 116<br>VA3222: 143 | VA3231: 187<br>VA3232: 220 | VA3241: 378<br>VA3242: 430 |                        |                        |                        |                        |

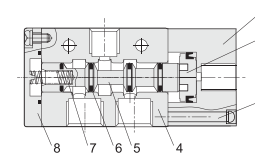
Note: The technical data of NO type and NC type are same.

Flow Chart

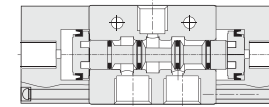


Internal structure

Single air control



Double air control

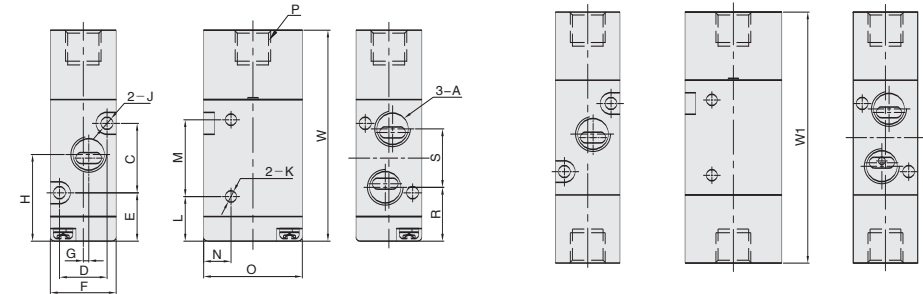


| NO. | Part name         | Material        |
|-----|-------------------|-----------------|
| 1   | Air control cover | Aluminum alloy  |
| 2   | Piston            | POM             |
| 3   | Screw             | Carbon steel    |
| 4   | Valve body        | Aluminum alloy  |
| 5   | Spool             | Aluminum alloy  |
| 6   | O-ring            | HNBR            |
| 7   | Spring            | Stainless steel |
| 8   | Rear cover        | Zinc alloy      |

Main Dimension

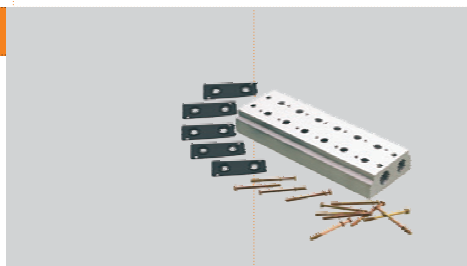
Single air control

Double air control



| Model/Sign | A    | C    | D  | E    | F  | G   | H    | J   | K   | L    | M  | N    | O  | P    | R    | S    | W    | W1* |
|------------|------|------|----|------|----|-----|------|-----|-----|------|----|------|----|------|------|------|------|-----|
| VA3211-M5  | M5   | 19   | 13 | 13.2 | 18 | 0   | 22.7 | 3.3 | 3.3 | 12.2 | 21 | 7.5  | 27 | G1/8 | 15.7 | 14   | 57.7 | 70  |
| VA3211-06  | G1/8 | 19   | 13 | 13.2 | 18 | 1.5 | 23.7 | 3.3 | 3.3 | 12.2 | 21 | 7.5  | 27 | G1/8 | 14.7 | 16   | 57.7 | 70  |
| VA3221-06  | G1/8 | 30   | 17 | 12.7 | 22 | 0   | 27.7 | 3.3 | 4.3 | 15.2 | 25 | 8.2  | 35 | G1/8 | 18.5 | 18.5 | 69.7 | 84  |
| VA3221-08  | G1/4 | 30   | 17 | 12.7 | 22 | 1.5 | 28.7 | 3.3 | 4.3 | 15.2 | 25 | 8.2  | 35 | G1/8 | 16.5 | 22.5 | 69.7 | 84  |
| VA3231-08  | G1/4 | 35   | 20 | 15   | 27 | 0   | 32.5 | 4.3 | 4.3 | 17.5 | 30 | 10.5 | 40 | G1/8 | 21.5 | 22   | 80.5 | 96  |
| VA3231-10  | G3/8 | 35   | 20 | 15   | 27 | 2   | 32.5 | 4.3 | 4.3 | 17.5 | 30 | 10.5 | 40 | G1/8 | 20.5 | 24   | 80.5 | 96  |
| VA3241-10  | G3/8 | 40.5 | 27 | 24.8 | 34 | 0   | 45   | 4.3 | 5.3 | 21   | 48 | 13.5 | 50 | G1/8 | 29.5 | 31.5 | 103  | 116 |
| VA3241-15  | G1/2 | 40.5 | 27 | 24.8 | 34 | 2   | 45   | 4.3 | 5.3 | 21   | 48 | 13.5 | 50 | G1/8 | 29.5 | 31.5 | 103  | 116 |

Note: The dimensions of NO type and NC type are same.



How to Order?

V -- 32 -- 1 -- N -- F

V series 3/2 way    1:1 series valve body  
2:2 series valve body  
3:3 series valve body  
4:4 series valve body

1:1 linker  
2:2 linker  
3:3 linker  
.....  
16:16 linker

N Confluence Plate

VBP -- 32 -- 2

V series blind plate (for V series manifold)

3: 3 Port,2 Position valve

1:1 series valve body  
2:2 series valve body  
3:3 series valve body  
4:4 series valve body

Corresponding Application

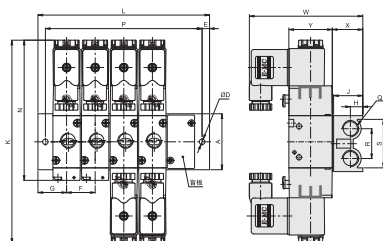
| NO. | Confluence Plate Model | Valve Model      |
|-----|------------------------|------------------|
| 1   | V321-NF (N≤16)         | V3211 (H) /V3212 |
| 2   | V322-NF (N≤16)         | V3221 (H) /V3222 |
| 3   | V323-NF (N≤12)         | V3231 (H) /V3232 |
| 4   | V324-NF (N≤7)          | V3241 (H) /V3242 |

\* V series manifold for 3/2,2 series valve body, 5 linkers, model: V322-5F

\* Blind plate for 3/2 valve, 2 series valve body, Model: VBP-322

Note: Blind plate assembly comprising: Blind, gaskets and mounting screws

Main Dimension

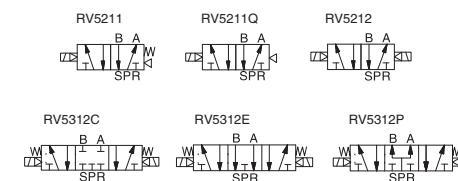


单位(mm)

| Model/Sign | L  |    |     |     |     |     |     |     |     |     | A    | D   | E    | F  | G    | H    | J    | K     |
|------------|----|----|-----|-----|-----|-----|-----|-----|-----|-----|------|-----|------|----|------|------|------|-------|
|            | 1F | 2F | 3F  | 4F  | 5F  | 6F  | 7F  | 8F  | 9F  | 10F |      |     |      |    |      |      |      |       |
| V321-□F    | 38 | 57 | 76  | 95  | 114 | 133 | 152 | 171 | 190 | 209 | 31   | 4.5 | 5.25 | 19 | 18   | 7.75 | 19   | 132.2 |
| V322-□F    | 46 | 69 | 92  | 115 | 138 | 161 | 184 | 207 | 230 | 253 | 45   | 4.5 | 6    | 23 | 23   | 10   | 23.5 | 163.4 |
| V323-□F    | 54 | 82 | 110 | 138 | 166 | 194 | 222 | 250 | 278 | 306 | 50   | 4.5 | 6    | 28 | 26   | 12   | 28   | 175.4 |
| V324-□F    | 63 | 98 | 133 | 168 | 203 | 238 | 273 | 308 | 343 | 378 | 62.5 | 5.5 | 7    | 35 | 31.5 | 16   | 35   | 199.4 |

| Model/Sign | G  |    |     |     |     |     |     |     |     |     | N     | Q    | R    | S    | W     | X    | Y  |
|------------|----|----|-----|-----|-----|-----|-----|-----|-----|-----|-------|------|------|------|-------|------|----|
|            | 1F | 2F | 3F  | 4F  | 5F  | 6F  | 7F  | 8F  | 9F  | 10F |       |      |      |      |       |      |    |
| V321-□F    | 28 | 47 | 66  | 85  | 104 | 123 | 142 | 161 | 180 | 199 | 92.1  | G1/8 | 17.5 | 25   | 75.2  | 20   | 27 |
| V322-□F    | 34 | 57 | 80  | 103 | 126 | 149 | 172 | 195 | 218 | 241 | 112.7 | G1/4 | 24   | 39   | 91.2  | 24.5 | 35 |
| V323-□F    | 42 | 70 | 98  | 126 | 154 | 182 | 210 | 238 | 266 | 294 | 124.3 | G3/8 | 29   | 42   | 98.2  | 29   | 40 |
| V324-□F    | 49 | 84 | 119 | 154 | 189 | 224 | 259 | 294 | 329 | 364 | 144.7 | G1/2 | 35.5 | 51.5 | 110.2 | 36   | 50 |



How to Order?

Low power solenoid valve

Series No. Valve body size ID Code Positions Ways Controls Original status Port size Reset Voltage Connection Cover color Acting type Thread type

N 1: 1Series 2: 2Series 3: 3Series 4: 4Series

R: Standard armature +Low power coil

2: 2 positions 3: 3 positions

5: 5 ways

C: Center close P: Center pressure E: Center exhaust (Only for 5/3 way)

M5: M5 06: 1/8" 08: 1/4" 10: 3/8" 15: 1/2"

Blank: Spring Q: Air (Only single control)

Blank: DIN connector K: Waterproof DIN connector (Only 2, 3, 4 series is optional)

Blank: Brown translucent J: Colorless and translucent

Blank: Internal pilot WB: External pilot

Blank: G P: PT T: NPT

Order Example:

RV series solenoid valve, 2 series valve body size, standard pilot+Low power coil, 5/2 way, single control, 1/4" port size, standard coil,DC24V, DIN connector, G thread, ERP code is: N2R251-08E4

Specifications

| Model NO.                        | N1R251-M5<br>N1R252-M5<br>N1R352-M5       | N1R251-06<br>N1R252-06<br>N1R352-06 | N2R251-06<br>N2R252-06<br>N2R352-06       | N2R251-08<br>N2R252-08<br>N2R352-08 | N3R251-08<br>N3R252-08<br>N3R352-08       | N3R251-10<br>N3R252-10<br>N3R352-10 | N4R251-10<br>N4R252-10<br>N4R352-10       | N4R251-15<br>N4R252-15<br>N4R352-15 |
|----------------------------------|---|-------------------------------------|---|-------------------------------------|---|-------------------------------------|---|-------------------------------------|
| Port size                        | M5  | G1/8                                | G1/8                                      | G1/4(Ex.G1/8)                       | G1/4                                      | G3/8(Ex.G1/4)                       | G3/8                                      | G1/2                                |
| Sectional area(mm <sup>2</sup> ) | 5/2:5.5(CV=0.31)<br>5/3:5.5(CV=0.28)      | 5/2:12(CV=0.67)<br>5/3:9(CV=0.50)   | 5/2:14(CV=0.78)<br>5/3:12(CV=0.67)        | 5/2:16(CV=0.89)<br>5/3:12(CV=0.67)  | 5/2:25(CV=1.40)<br>5/3:18(CV=1.00)        | 5/2:30(CV=1.68)<br>5/3:18(CV=1.00)  | 5/2:50(CV=2.79)<br>5/3:30(CV=1.67)        | 5/2:50(CV=2.79)<br>5/3:30(CV=1.67)  |
| Working medium                   | Clean air(After 40 μm filtration)         |                                     |   |                                     |   |                                     |   |                                     |
| Acting type                      | Internal pilot type / External pilot type |                                     |   |                                     |   |                                     |   |                                     |
| Reset Type                       | Spring reset / Gas reset                  |                                     |   |                                     |   |                                     |   |                                     |
| Lubrication                      | Not required                              |                                     |   |                                     |   |                                     |   |                                     |
| Working pressure(MPa)            | 0.15-0.8                                  |                                     |   |                                     |   |                                     |   |                                     |
| Guaranteed pressure(MPa)         | 1.2                                       |                                     |   |                                     |   |                                     |   |                                     |
| Working temperature(°C)          | -20~70(Dry air)                           |                                     |   |                                     |   |                                     |   |                                     |
| Voltage range                    | -15%~10%                                  |                                     |   |                                     |   |                                     |   |                                     |
| Power consumption                | DC:0.7W                                   |                                     |   | DC:1.0W ; AC:1.0VA                  |   |                                     |   |                                     |
| Insulation class                 | Class F                                   |                                     |   |                                     |   |                                     |   |                                     |
| Protective class                 | IP65(DIN40050)                            |                                     |   |                                     |   |                                     |   |                                     |
| Max. acting frequency            | 5/2: 5 Cycles/s; 5/3: 3 Cycles/s          |                                     |   |                                     |   |                                     |   |                                     |
| Activate time(S)                 | <0.05                                     |                                     |   |                                     |   |                                     |   |                                     |
| Weight(g)                        | N1R251: 110<br>N1R252: 171<br>N1R352: 181 |                                     | N2R251: 209<br>N2R252: 314<br>N2R352: 357 |                                     | N3R251: 289<br>N3R252: 400<br>N3R352: 450 |                                     | N4R251: 528<br>N4R252: 638<br>N4R352: 727 |                                     |