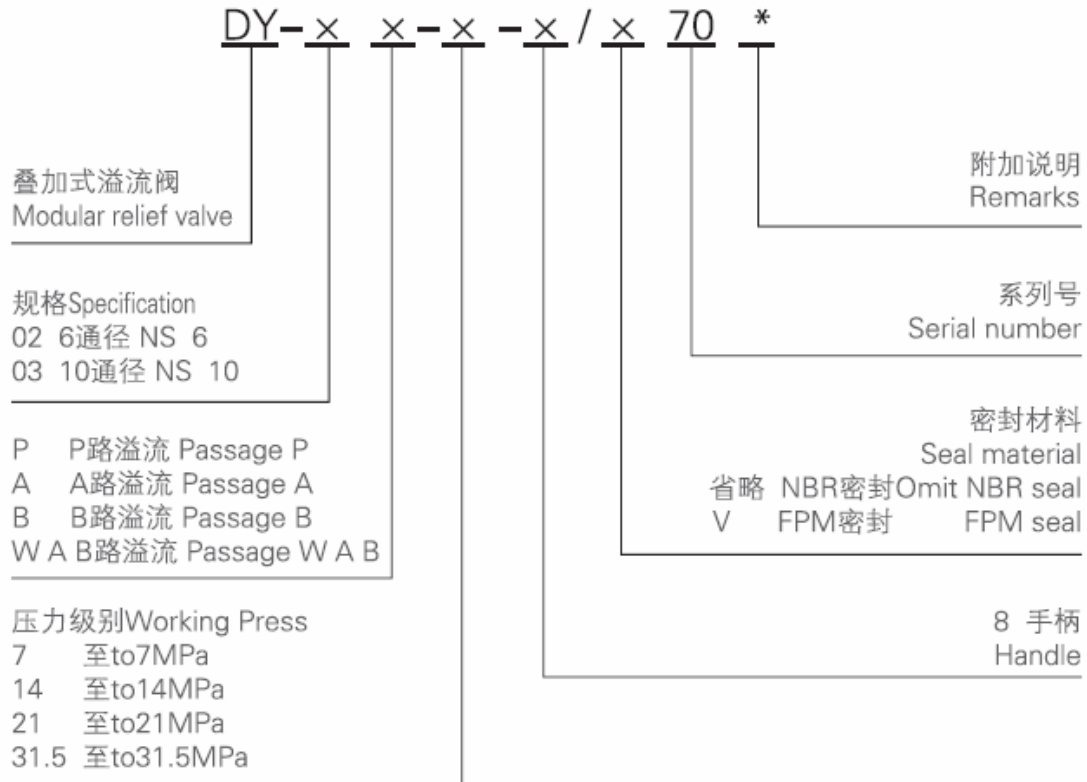


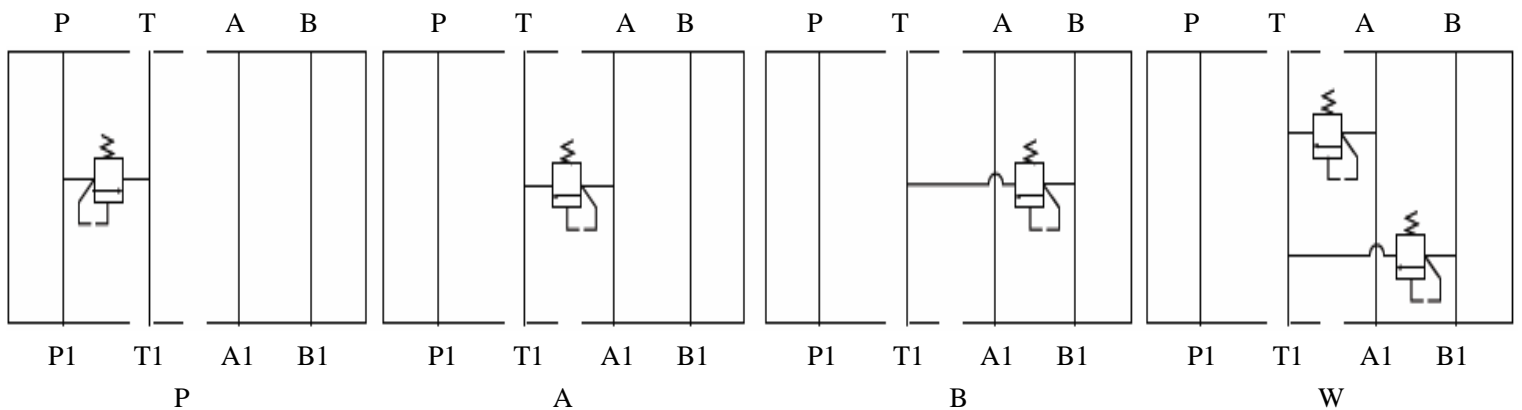
Modular Relief Valve



Model description



Code symbol

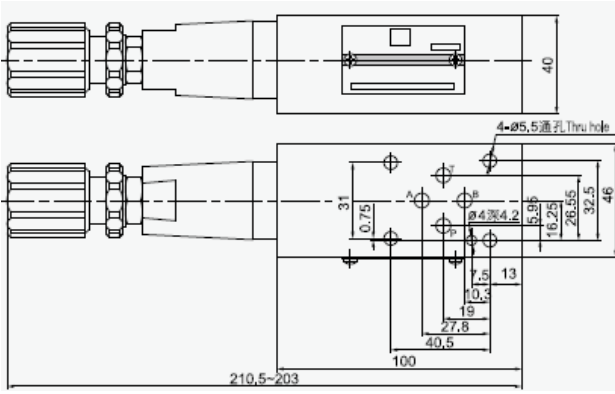


Technical Specification

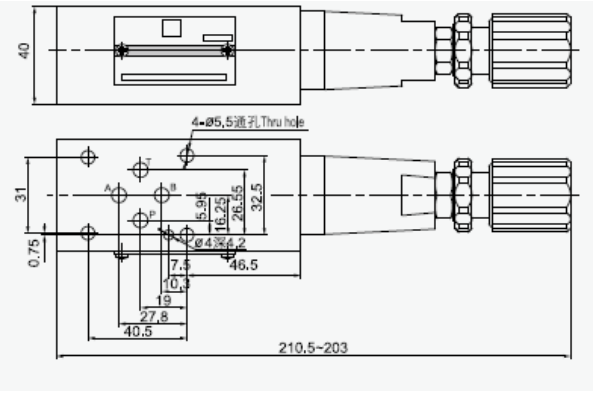
	Specification	02	03
Parameters			
Maximum working pressure (Mpa)		31.5	
Maximum flow(L/min)		35	70
Working fluid		Mineral oil, phosphate-ester	
Fluid temp(°C)		-20~70	
Viscosity(mm ² /s)		12~380	
Working Press(Mpa)		7 14 21 31.5	
Weight(Kg)		1.49 2.19	3.35 4.56

External dimensions

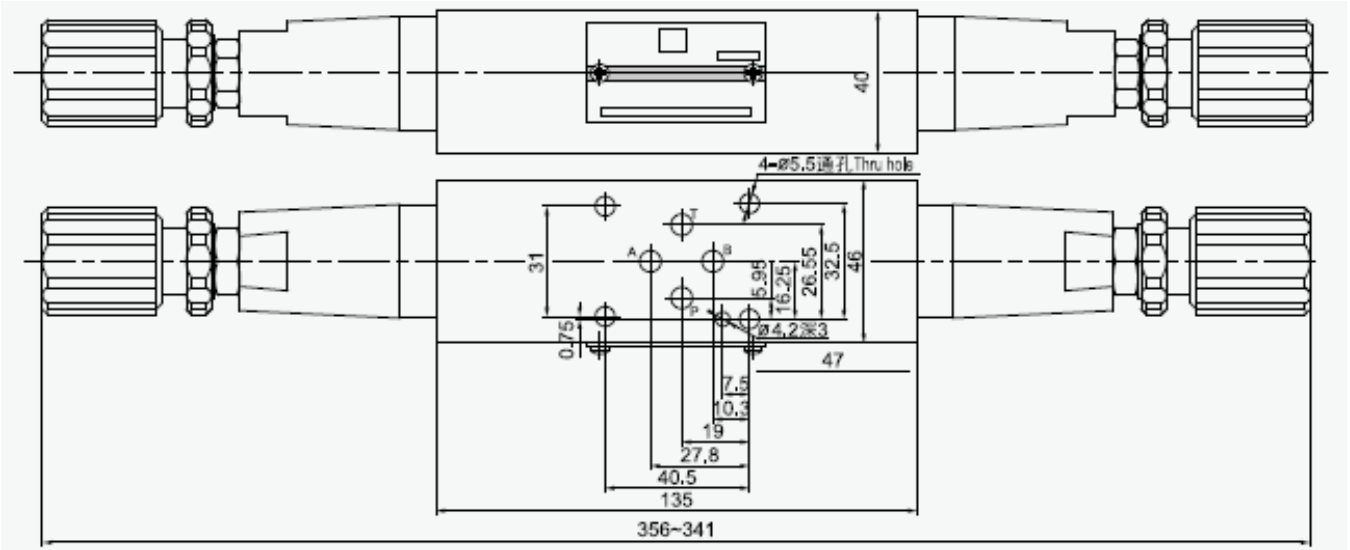
DY-02-A ...



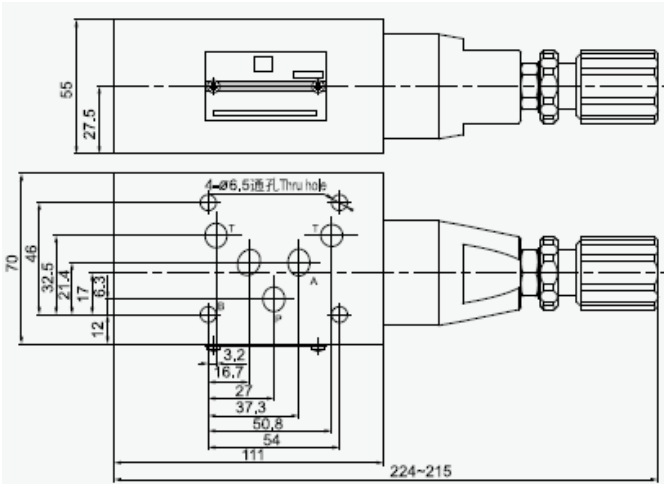
DY-02-B,P ...



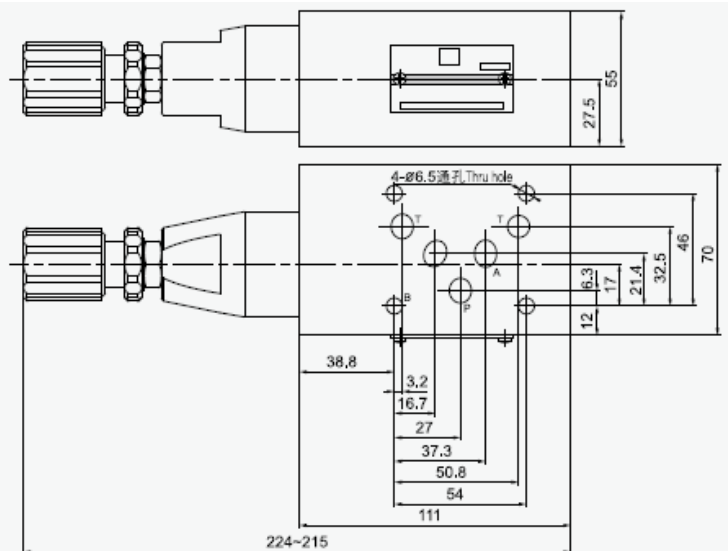
DY-02-W ...



DY-03-A ...



DY-03-B,P ...



DY-03-W ...

